

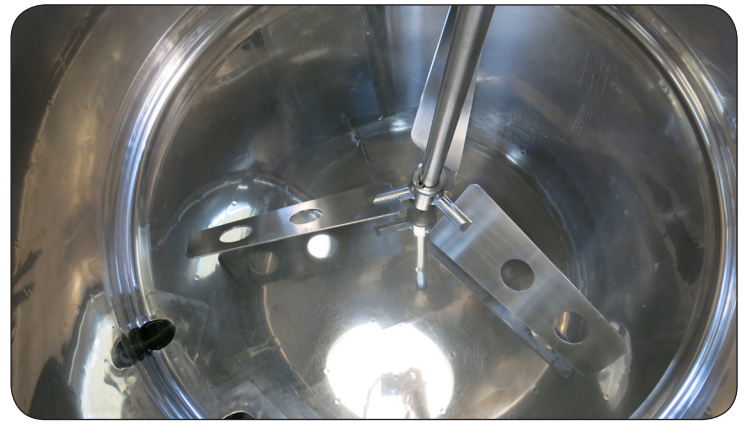
Brewing Block BHW



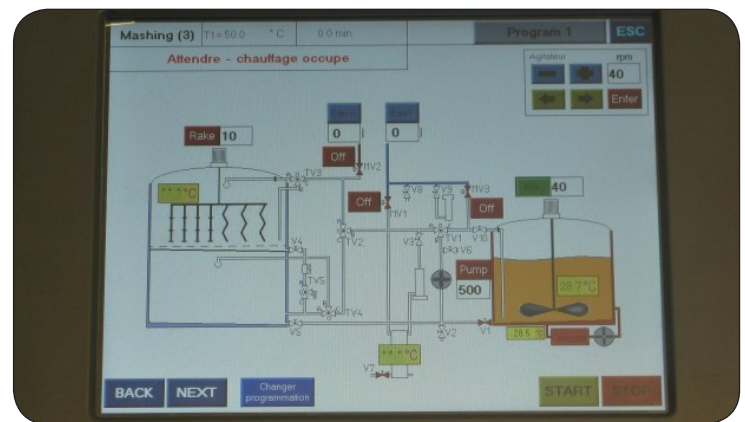
PLEVNIK

Mash kettle

- Vertical cylindrical insulated tank
- Energy saving, laser welded bottom and wall exchanger
- Made from stainless steel AISI 304/316
- The inside area is made from 2B, welds are cleaned-sharpened; outside area is made from SB, welds are cleaned-sharpened
- Bottom is inclined 2,5% to the direction of the outlet
- Cover with service manhole
- Outlet connection with butterfly valve
- CIP cleaning ball 1x
- Vapor chimney
- Propeller stirrer with holes
- Hops filter
- Connection for influx of water
- Heating with el. heaters
- Circulation pump for the circulation of heating water, security valve, expansion vessel
- Motoreducer for the stirrer



Stirrer in mash kettle with lifting mechanism for whirlpool



Touch screen controller

Lauter tun

Intend for draining - filtering and collect of clear wort in collection vessel under the lauter tun

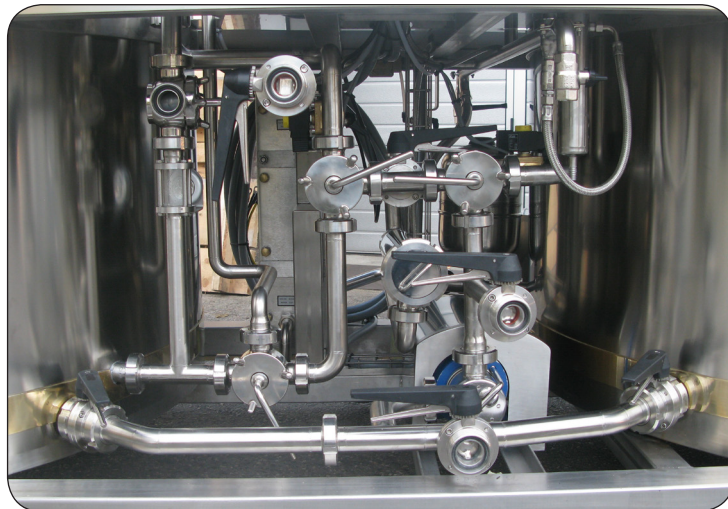
- Vertical cylindrical insulated tank (without heating section)
- Made from stainless steel AISI 304
- Treat inside area is made from 2b, welds are cleaned-sharpened; outside area is made from SB, welds are cleaned-sharpened
- Bottom in the lauter tun is inclined to the outflow 2%, bottom in collection vessel a bit concave upward with outlet by side
- Welded basic cover and service manhole on top of lauter tun + tank door by side 500x400 (for emptying of worth) with removable channel
- Service tank door 500x400 by side on collection tank with inspection glass window
- Outlet connections are DN 40 / 50 with butterfly valve
- Filtering bottom – multi part perforated plate (holes 1,5mm)
- CIP cleaning ball in lauter tun and in whirlpool
- Rake stirrer



Rake stirrer in lauter cistern, line cut filter bottom

Pipelines block between Mash kettle, Lauter tun and Whirlpool:

- Three way plug valves
- Butterfly valves
- Tubes/ pipelines with connections DIN 11 851
- Centrifugal pump - rubber impeller for pumping wort, beer, water, CIP
- Inspection glass window with lamp 1x
- SS Plate heat exchanger for cooling of the beer
- Water cooled tube for sampling
- Line tube hops filter with holes $\varnothing 1\text{mm}$
- Main connection for fresh water
- Connection for hot water
- Flow meter for hot and cold water



Pipeline with pumps and valves

Control panel:

Stainless steel electro steering case with:

- Electric box with a 10,4« touch screen controller BH3 for the automatic regulation of heating, temperature displays for setting, controlling and monitoring the process of beer making
- Variable speed control for stirrer in mash kettle
- Variable speed control for rake stirrer
- Variable speed control for centrifugal pump
- Contactors, relays, safety switches, . .
- Emergency STOP
- Power supply: 400V 3N 50Hz



Pre-masher with funnel

Options

- Module for choosing heating power
- Stronger electrical heaters (heating $1^{\circ}\text{C}/\text{min}$)
- Combined heating (hot water + electricity)
- Pre-masher with 60l cone
- Pneumatic lifting of the rake stirrer
- Line cut filter bottom
- Vapor condenser for the brewing cistern without energy recuperation
- Tube vapor condenser for the brewing cistern for heating sanitary water and trapping steam (energy regeneration)

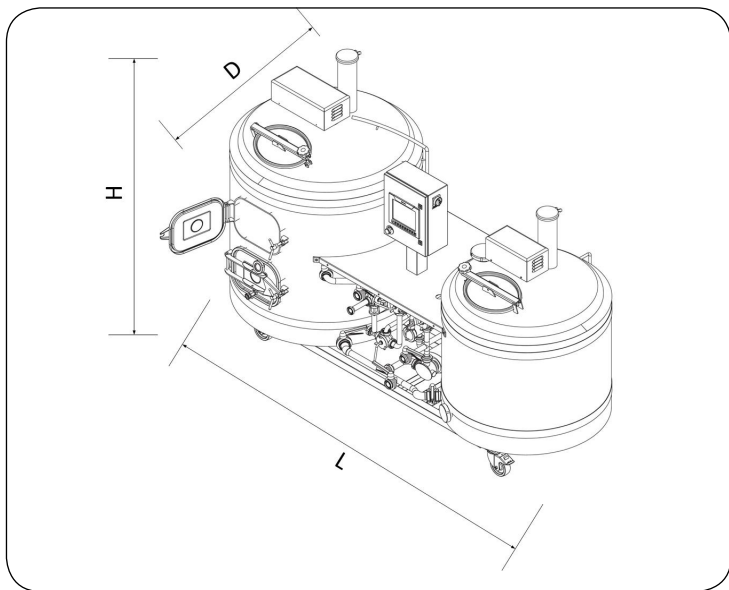


Vapor condenser

The BHW is a universal system for brewing all types of beer. The brewery consists of three vessels, control panel, wort cooler, pump, hops filter and pipeline.

The tanks and pumps are connected with stainless steel piping, valves, flow meters and sight glasses. The system is designed for multi-step mashing but allows also single temperature infusion mashing.

It is intended for customers who want to immediately start producing beer without lengthy installations.



Advantages of the BHW:

- **Easy and fast** installation
- The brewhouse is manually operated with the support of a controller that guides the user step by step through the production process. The processes of mashing, lautering, boiling and cooling are **automatically controlled** and adjusted on a control panel with **touch screen**.
- Minimal space requirement
- Vessels and pipelines cleanable with CIP
- Energy efficient, heating speed 1°C/min
- Hot water produced during boiling can be used for heating the water for the next brew
- Possibility to heat with electrical heaters, hot water, steam (indirect)...

Type	Heaters power (kW)	Volume mash cistern (l)	Volume lauter cistern (l)	Volume whirlpool cistern (l)	Dimensions (mm)			Weight (kg)
					L	D	H	
BHW 500	36	650	600	600	3120	1370	1960	650
BHW 1000	60	1250	1050	1050	3800	1550	2600	1500



PLEVNIK engineering and production d.o.o.
 Podsmreka 56, 1356 Dobrova, Slovenia
 Tel.: 00386 / (0)1 200 60 80
 Fax.: 00386 / (0)1 257 44 22
 E-mail: info@plevnik.si, <http://www.plevnik.si>

Representative